

Learn with Project Choice



Information for students, parents and carers

Are you looking for support to get into paid employment?

Are you looking for real hands on work experience?

Are you motivated to work hard to get experience to find a paid job?

What is Project Choice?

Project Choice is a specialist **College** providing tailored educational support, and a **supported internship course** for young adults aged 16-24 with learning disabilities/ difficulties and/ or Autism.

We partner with NHS healthcare settings, local organisations and private businesses to create supported work environments that provide real work experience for our Learners.

Our support is tailored to each Learner, based on their skills and interests. Interns spend 1 year learning maths, English and employability skills and attend up to three, 12-week placements with a Project Choice Partner.

The College is supported by the NHS as part of the ongoing commitment to improving employment outcomes for vulnerable groups.

Our Approach

Project Choice has been supporting Interns for over 15 years. These are our values:

Person-centred - consider the individual needs of all Project Choice stakeholders to enable our interns get the best start to their working careers.

Outcome Focused – create positive outcomes for the interns and business partners.

Quality driven - ensure that we maintain a high standard of support and education.

Excellence - be the best in our field and transforming societal expectations of people with additional needs.

The Project Choice Impact

In 2020 – 2021 academic year, Project Choice Interns

50%

entered **paid employment, apprenticeships, or volunteering** roles.

40%

went on to complete **further higher education**



Our College

Project Choice is a registered College and provides Special Education Needs and Disability (SEND) educational support.

All of our education provision is subject to Ofsted Inspection and Department for Education (DFE) regulations.

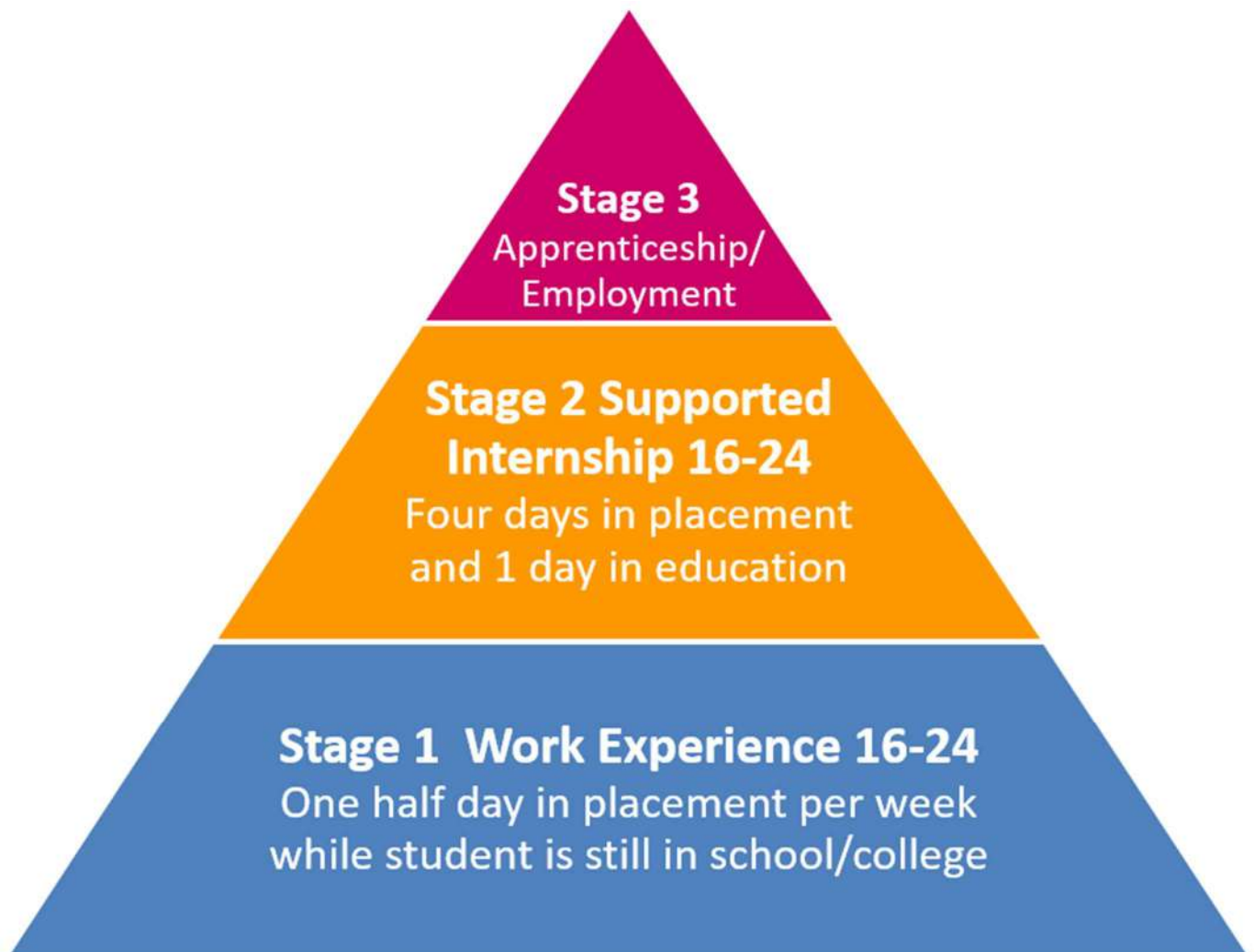
We teach an Education and Skills Funding Agency (ESFA) approved curriculum and National Council for Further Education (NCFE) accredited provision.

Our curriculum includes:

- Employability Skills
- Functional Maths and English
- Preparation for Adulthood
- CV, interview and job search preparation

Our Support

We support young people to gain work skills through three stages of development to access employment



“This high-quality Supported Internship programme creates an ambitious challenge for a successful future for the interns.”

- Ofsted Report (Jan 2020)

1. Work Experience Support

- For Students 16-24 still in school/ college
- Includes one half day per week for 6 weeks.
- Support is organised through your school.
- Project Choice Work Experience Leads will meet with you to talk about what kind of work experience you want to do. They arrange different placements.

2. Supported Internship Support

- Project Choice runs 5 days a week, Monday to Friday over an academic year, September to July.
- Each week, Interns attend up to 1 full day of education (maths, English and employability lessons) and up to 4 days of professional placements.
- We provide full transition support and can tailor education and placements to suit the Interns needs.
- Placements with Project Choice business partners are linked to each Interns skills and interests.
- Interns are given a 2 week full-time induction prior to starting any placements with educational learning including confidentiality, inclusion and diversity and professional expectations.
- Interns attend all additional training as required by their placement partner.
- Local Coordinators complete weekly/ fortnightly reviews and work with partners to develop and maintain the Intern placements.

3. Apprenticeships & Employment

- Support with Job Applications and interview practice
- Support with formal discussions with the employer around reasonable adjustments in the recruitment process
- Fortnightly* review meetings with intern/employer/training provider *can be frequent as required
- Pastoral Support
- HR Issues (reorganisation, conduct, performance etc.)
- Any ad hoc issues that may arise throughout the 5-year period after leaving Project Choice

Eligibility & how to apply?

To join, Project Choice Interns must meet each of the following eligibility criteria.

- Live within one of our current Local Authority Partnership areas (see our locations)
- Be aged 16 – 24 years
- Have an approved and active Education, Health and Care Plan (EHCP).

To apply, go to our website and complete the online form or download and send us a hardcopy application form.

See the website for details



Scan for website

Our Locations

We are growing every year. Contact us, to find out more how to start a Project Choice group in your area.

North

- Darlington
- Durham
- Hartlepool
- Middlesbrough and Redcar
- Newcastle
- North Tyneside
- Northumberland
- South Tyneside
- Stockton
- Sunderland

Yorkshire and Humber

- York
- East Riding
- Sheffield
- Rotherham
- Doncaster
- Lincolnshire

South

- Hampshire
- Hertfordshire
- Portsmouth
- Southampton

London

- Barnet
- Brent
- Camden
- Ealing
- Harrow
- Haringey
- Hillingdon
- Islington

Megan's Story

Megan has special education needs and disabilities including a genetic disorder called 22Q11 Deletion Syndrome (or Di George Syndrome) and ADHD.

She commenced the Project Choice Internship in September 2019, and completed two placements at the in her local NHS Hospital.



Megan overcame challenges relating to self-confidence and made excellent progress on the Internship, receiving positive feedback from both placements.

In February 2020, she secured a job as a domestic services assistant at ENGIE Soft Services, supporting the NHS during the Covid-19 pandemic.

Liam's Story

Liam attended a specialist ASD school and Sixth Form before starting a Supported Internship with Project Choice in September 2019.

He worked hard and excelled in both of his work placements, and during the year his confidence improved, learning many valuable work and independence skills.



Despite the Covid-19 restrictions and lockdown, Liam continued to receive support from Project Choice staff with applying for jobs, and his hard work paid off: he's now secured paid employment at a food manufacturer in his local city.



Project Choice
Making a **Difference**

If you would like further information about Project Choice please get in touch with our team at the address below:

Contact Us

Email: Project.Choice@hee.nhs.uk



Scan for website

Address:

Project Choice Supported Internship College
The Grainger Suite,
Dobson House,
Regent Centre,
Newcastle upon Tyne,
NE3 3PF



Project Choice
Making a **Difference**

Contact Us:

Email:
Project.Choice@hee.nhs.uk



Health Education England