

The NHS logo, consisting of the letters 'NHS' in white on a blue rectangular background.

**Lincolnshire**  
Integrated Care Board



## All Age Continuing Care Lincolnshire ICB

# Childrens Continuing Care

 Department  
of Health

National Framework for  
Children and Young  
People's Continuing Care

2016

January 2019

- Those up to their 18th birthday who have needs arising from disability, accident or serious illness (congenital, genetic, long-term deteriorating conditions, life-limiting conditions, mental health needs, learning disabilities and end-of-life care).
- Health needs are so complex they cannot be met by universal, targeted or specialist health services.



# Childrens Continuing Care

## Who can make a referral?

- Any appropriate health or social care professional in the child/ young person's multidisciplinary team.

## What happens when a referral meets criteria?

- A minimum of two professionals (usually from social care and health) form a multidisciplinary team for a Nurse Assessor to complete a Decision Support Tool (DST) to determine eligibility for Continuing Care. Based on the health domains within DST, the Assessing Nurse makes a recommendation.
- CYP panel (independent chair, health, social care and education representatives) deliberate the recommendation.
- If eligibility is agreed, a package of care is then formulated by the Childrens Continuing Care Team.

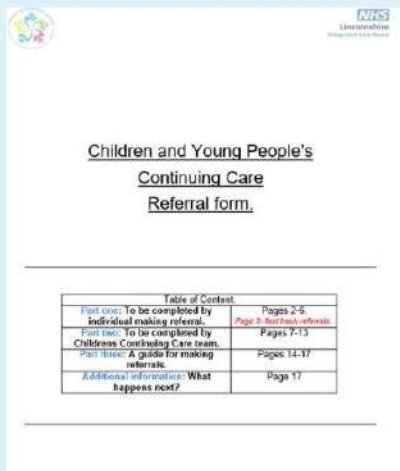


Table of Contents	
Part One: To be completed by individual making referral.	Pages 2-5
Part Two: To be completed by Childrens Continuing Care team.	Pages 7-13
Part Three: A guide for making referrals.	Pages 14-17
Additional information: What happens next?	Page 17

# Packages of Care- Personal Health Budgets

## Notional Budget.

A number care hours is awarded, no money changes hands with the family. The ICB commission a care provider to facilitate care.

## Direct Payment Budget.

A parent/guardian is responsible for the money spent on care (they are the employer).

## Third Party Budget.

A legally independent organisation holds the budget and will pay for care agreed in the care and support plan.

# Transitioning from Childrens continuing care to Adult Continuing Health Care (CHC)

16 years.

Reviews/assessments will start to identify equipment and specialist provisions required for adult services.

17 Years

The young persons case is brought to the attention of the correct service who will be responsible for completing the adult DST.

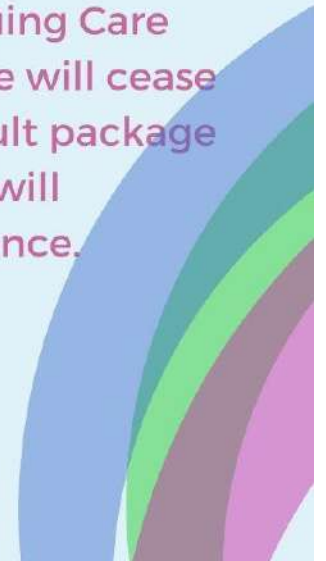
17 and 5 months

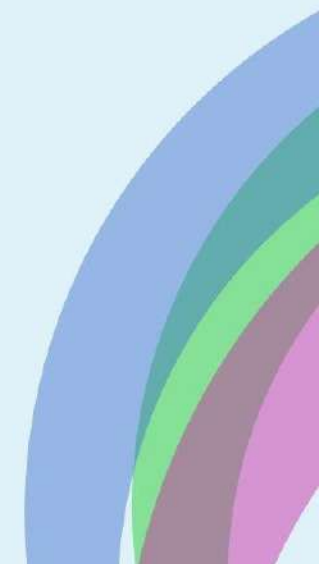
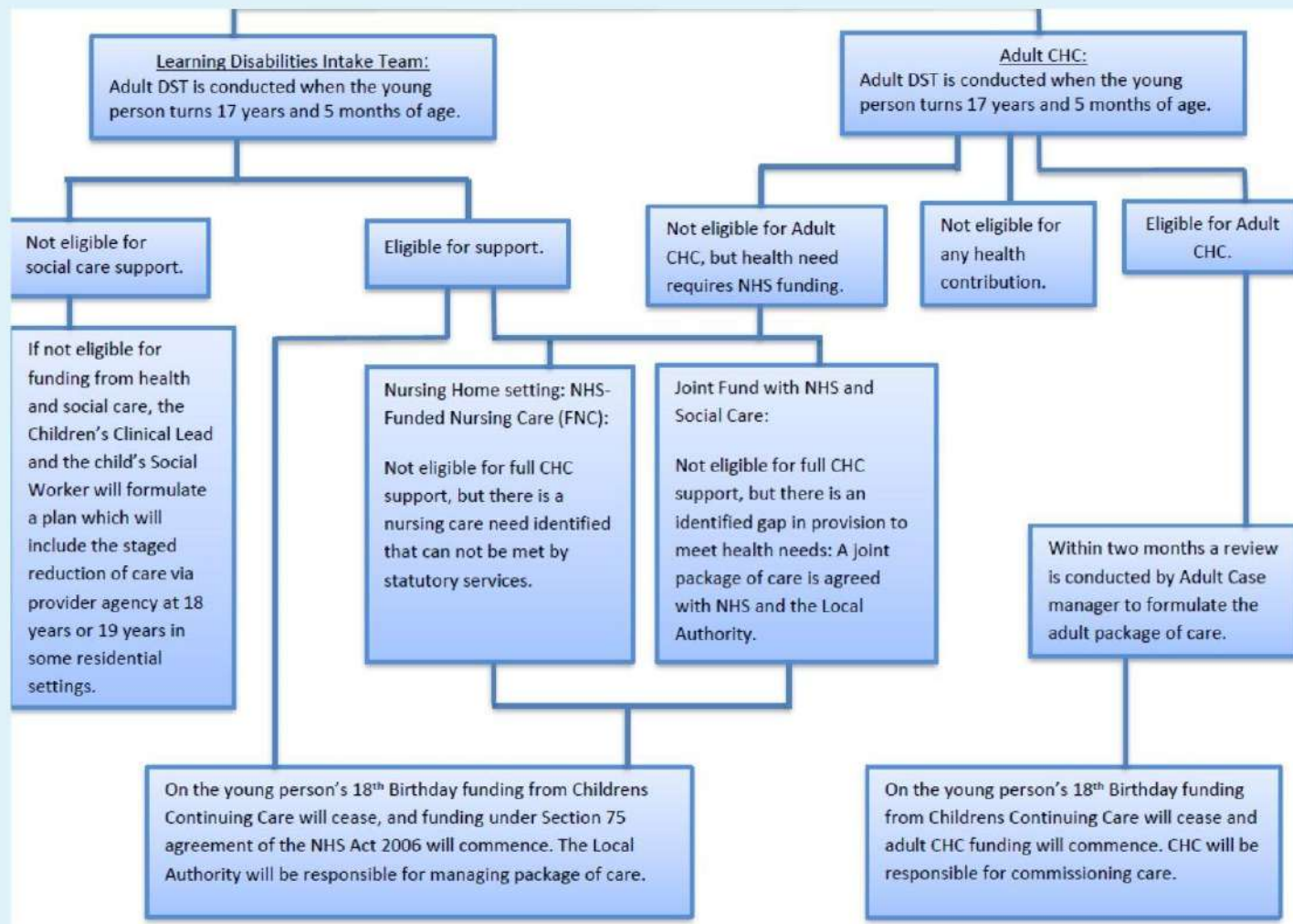
Adult DST is conducted by either Adult CHC or The Learning Disabilities intake team.

If eligibility is agreed, Adult package of care is formulated by Adult CHC Case Manager.

18 years

Childrens Continuing Care package will cease and adult package of care will commence.





# Adult Continuing Health Care (CHC).

**NHS continuing healthcare can be provided in a variety of settings, such as in your own home or in a care home.**

**Those NOT open to Childrens Continuing Care require an adult checklist referral to be made.**

## **Who can make a referral?**

- Only professionals trained to do so can submit and adult check list trained to do so can submit and adult check list.

## **What happens when a checklist meets criteria?**

- Similar to children's continuing care a DST is booked with a CHC Nurse Assessor, Adult Social Care, the individual with their carer/ family member.
- Like children's DST's, the individual should be fully involved in the assessment process.



Thank you for listening.



**Lincolnshire**  
Integrated Care Board



 main office: 01522 513444

 [licb.chc@nhs.net](mailto:licb.chc@nhs.net)

 NHS Lincolnshire Integrated Care Board, All Age Continuing Care  
The Bridge, Lions Way, Sleaford, NG34 8GG.